



Newsletter September 2021



Welcome

Here we are heading into Autumn, in the thick of sheep sales where thankfully we are still seeing a buoyant trade and confidence in this sector. I've noticed with our sheep work recently that we are having far more conversations with clients about quarantine, dosing, worm egg counting etc, which is great to see. The days are getting shorter, the nights longer and our thoughts need to turn to housing, although hopefully September will be kind and the dry spell will continue. There are an awful lot of berries on the trees at the moment which hopefully doesn't suggest we are in for a long winter!

Mark Stott

Included this month

- Red Tractor Beef & Lamb Revised Standards- Finbarr O Sullivan Greene
- Tapeworm in Cattle and Sheep part 1- Sarah Harker
- Healthcare for your best workers - Kathrine Muller Jones
- Test Don't Guess- Finbarr O Sullivan Greene
- News and Diary Dates

Red Tractor Beef & Lamb Revised Standards



From the 1st of November there are significant changes to Red Tractor farm assurance guidelines. Now is the time to review the new standards so that if changes need to be made, we have time to put plans in place. Although this is not a comprehensive list of the updates having reviewed the guidance notes I have pulled out key changes that will impact vets' involvement in farm assurance starting from the 1st November.

The biggest change for vets is that a veterinary review of the farm health plan is now a key requirement not a recommendation. This brings beef and sheep producers in line with dairy guidelines. This review should include..

- An annual health and performance review
- Review of the current husbandry procedures on the farm
- An annual collation and review of antibiotic usage

Continued..



Time to plan cattle pneumonia vaccinations, please speak to us for advice.



For Further Information please see-

Beef Technical Bulletin
[https://
assur-
ance.redtractor.org.uk/
contentfiles/Farmers-
7293.pdf](https://assur-ance.redtractor.org.uk/contentfiles/Farmers-7293.pdf)

Dairy Technical Bulletin
[https://
assur-
ance.redtractor.org.uk/
contentfiles/Farmers-
7295.pdf](https://assur-ance.redtractor.org.uk/contentfiles/Farmers-7295.pdf)

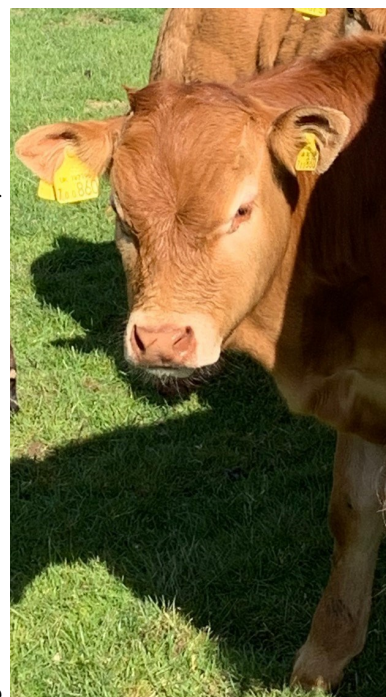


Changes to Red Tractor continued..

Other key changes include

- At least one member of farm staff must have attended a medicine course (after October 2016). These can be booked through reception at Lancaster/J36 or via Linda at linda@farmgatevets.com
- The guidelines are making a strong recommendation for analgesic (pain killer) use prior to routine animal husbandry procedure with a potential to cause pain – e.g., disbudding or castrating. Note that analgesics are required (not just recommended) for some procedures. This is detailed in an appendix of the red tractor guidelines. There is now a specific recommendation for the use of pain killers in calves being disbudded with caustic paste.
- Finally, a recommendation is in place that all cattle producers have a **BVD eradication plan**. This will become a full standard from October 2022.

Finbarr O Sullivan Greene



“Please give us enough notice as (particularly in the spring) we may not be able to turn around health plans quick enough in time for inspections. Bottom line is act now to avoid noncompliance later”

Tapeworms in Cattle and Sheep—part 1 of 2

Tapeworms often have a lifecycle that involves 2 different species. Adult tapeworms in the gut of sheep and cattle have a larval stage in forage mites. These live on pasture and are ingested as animals graze. The adults can reach a length of 2 metres or more and live in the small intestine. Egg-containing segments pass in the faeces and are very visible as ribbed tapes up to a few centimetres long. These are commonly seen in lamb muck, for example when working in sheep yards, but I had never seen them in cattle until I was sent this photo one morning. It came from a dairy cow as she went through the parlour, and the questions posed were what is this and what do I need to do about it?



Tapeworm passed in the parlour from an adult cow.

My answers were it is a *Moniezia* tapeworm, and you don't need to do anything. Adult tapeworms in the gut of sheep and cattle are considered relatively harmless as they are only attached to the gut wall by a pin-head sized sucker and thus do little damage. There is some argument that a heavy infestation in small lambs can cause gut blockage but even this is doubted by many. Certainly in adult dairy cattle, it will be doing no harm even though it is very visible.

I am sure there are plenty of sheep that get wormed because of tapeworm segments seen in the muck. This is probably an unnecessary treatment, wasting time and money and contributing to the development of resistance, unless you are needing to treat for roundworms as well.

It is always interesting to see new things, so keep sending the pictures and asking the questions!

Sarah Harker

Healthcare for your best workers

We are very good at telling you all to vaccinate your stock and to be proactive in preventative healthcare but what about the trusty farm dogs that are just as vital! With the increase in people using footpaths etc it is even more important to ensure that farm dogs are looked after. We recommend that all dogs are vaccinated for the following diseases:

- **Distemper**- caused by a virus that attacks various organs within the body including the guts, heart, and immune system. It causes a variety of signs from mild to seizures and death.
- **Infectious hepatitis**- a virus that attacks the liver, immune system, kidneys, lungs and heart. Symptoms vary depending on the organs involved but range from lethargy, coughing, vomiting and diarrhoea to seizures and death.
- **Parvovirus**- causes acute vomiting and diarrhoea and can quickly be fatal especially in young unvaccinated dogs.
- **Kennel Cough** - a highly contagious respiratory disease picked up where dogs are mixing possibly at gathering or with rambler dogs.

All of these diseases can be passed on from faeces and bodily fluids from other dogs and can also be present in the environment

- **Leptospirosis**- is a bacterial disease that can cause serious damage to vital organs. Dogs can catch leptospirosis from another infected dog, urine from an infected cow, pig or rodent or infected wet ground or fresh rivers. Farm dogs are at high risk of catching Lepto from either infected stock or rodents on the farm. It is also zoonotic and can cause serious disease in humans so every care should be taken to protect people on the farm.

Vaccinations consist of a primary course of 2 vaccines 4 weeks apart, with annual boosters. If dogs are over 18 months since their last vaccine then we would recommend restarting their vaccinations.

All farm dogs should also be **wormed** every 3 months as a minimum. This covers them from infection but also breaks the life cycle of some worms that can be passed onto sheep. This is now a Farm Assurance requirement and must be recorded in your medicines book. Regular tick treatment is also needed especially through the high risk summer months as ticks carry diseases that can cause long term health issues.

If you would like any more information please give us a ring. Vaccinations can either be done at the surgery or on farm (please warn us if a muzzle is required!).

Kathrine Muller Jones



Photo courtesy of Meg Hutchinson,
Littledale Sheepdogs

Test Don't Guess –when it comes to worming sheep and lambs.

What's involved in worm egg counts?

Take a sample – all you need to do is pick 10 fresh samples when shepherding sheep. Best time to do this is first thing in the morning or after rounding with a dog – sheep always defecate just after they move.

- Get it to the practice (or we can collect it for free on your delivery day).
- Get your result (normally same day or within 24h).

What will the result tell you?

Does the group need worming or just individuals?

If the group needs worming you can use follow up samples to screen whether or not you have resistance to a particular wormer or not.

All this for just £17.17 ex vat per pooled sample of up to 10 (free to sheep club members). For more information please speak to us.

Finbarr O Sullivan Greene

Finbarr O Sullivan Greene



farmgate
vets
sheep club

Ask about joining today

- Flock Health Plan Visit plus 1 other
- Unlimited faecal worm egg counts
- Regular member only talks, farm visits, trips
- 20% off tup vasectomies and fertility testing
- A place on our lambing course
- In house post-mortems (exc Lab fees)

For cost effective sheep health management

#farm24 Rogues Gallery!

For those of you who follow us on social media you would have seen our efforts to support the Farmers Guardian Campaign to promote the best of British farming to the public, Farm 24!



The rain didn't dampen spirits at Garstang Show

The team had a fabulous day at Garstang show last month. A great atmosphere, a brilliant turnout of stock and so nice to see so many of you on the stand. Looking forward to doing it all again at the Westmorland County Show, hopefully see you there!



Dates For Your Diary



Red Tractor **Understanding Veterinary Medicines** course. Inspectors are now looking for certificates of attendance which becomes an official standard for Beef and Lamb in November 2021. Please book early as these courses are filling up fast and our face to face meetings are running at reduced numbers for Covid Safety.

Thursday 23rd September 2021 -1pm—2.30pm online - Zoom.

Tuesday 19th October 2021 –1.30pm—3.30pm at J36 practice meeting room, refreshments inc.

To book please e mail linda@farmgatevets.com or phone the practice. Cost £30 plus VAT inc. course book and certificate.



Westmorland Country Show, Wed 8th and Thurs 9th September 2021. Looking forward to seeing lots of you on our stand at the County Show this year, please come and see us for a chat, a brew and an Ice cream.



Fluke Control Best Practice and how to check if your drenches are working?

7pm, Tuesday 21st September 2021 at Tynedale Farm Services, Greenodd, LA12 7RT . **A joint meeting with ourselves and Tynedale, consisting of an informative talk by our Vets, supper**

and chatting. Please RSVP for food purposes by phoning the practice or e mail linda@farmgatevets.com.

Lancaster Office

Tel: **01524 60006**

Open 8:30am-5pm

Monday-Friday

9am—12noon Saturdays

CLOSED Sundays

J36 Kendal Office

Tel: **015395 67899**

Open 8:30am-5pm

Monday-Friday

9am—12noon Saturdays

CLOSED Sundays

Sedbergh Office

Tel: **015396 20335**

Open 8:30--5pm

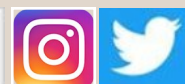
Monday-Friday

CLOSED Saturdays

CLOSED Sundays

farmgate
vets

www.farmgatevets.com



PLUS 24 hour emergency service 7 days a week